

2.0





# COMP\_ LYRA 50

Um espaço para sonhar.

*Un espacio de sueño.*

Un espace pour rêver.

*A dreaming space.*

# COMP LYRA 50

Quarto  
Dormitório  
Chambre  
Bedroom



# COMP\_ LYRA 51

Uma solução para desfrutar de todo o conforto.

*Una solución para disfrutar de todo el confort.*

Un gain d'espace pour profiter de tout le confort.

*Solution for your confort.*





# COMP\_

## LYRA 51

Quarto  
Dormitório  
Chambre  
Bedroom







## COMP\_ LYRA 52

Tons claros tornam o espaço mais tranquilo.

*Tonos claros te aportan tranquilidad.*

Tonalités pastels pour un espace plus serein.

*Light colors for your light moments.*



# COMP\_

## LYRA 52

Quarto  
Dormitório  
Chambre  
Bedroom

Ao trabalhar com folha natural, pode haver pequenas alterações nas cores dos acabamentos devido às características da madeira natural.  
 Al trabajar con chapas naturales puede existir pequeños cambios en los colores de acabados debido a las características de la madera natural.  
 Le travail avec la feuille de bois peut amener quelques différences de coloris dans les finitions, ceux sont les caractéristiques inaltérables du bois naturel.  
 When working with natural foil, there may be minor changes in finish colors due to the characteristics of the natural wood.

**Carvalho\_ Roble\_ Chêne\_ Oak**



**04**  
 Cerejeira  
 Cerezo  
 Cerisier  
 Cherry Wood



**07**  
 Carvalho Natural  
 Roble Color natural  
 Chêne Couleur Naturelle  
 Natural Color Oak



**08**  
 Caramelo  
 Caramelo  
 Caramel  
 Caramel



**09**  
 Wenguê Escuro  
 Wenguê Oscuro  
 Wenge Fonc  
 Dark Wenge



**10**  
 Cor Nogueira  
 Color Nogal  
 Chêne Foncé  
 Walnut Color



**46**  
 Azul Mate  
 Azul Mate  
 Bleu Mate  
 Blue Mate



**47**  
 Telha Mate  
 Teja Mate  
 Brique Mate  
 Brick Red Mate



**48**  
 Cinza Mate  
 Gris Mate  
 Gris Mate  
 Grey Mate



**49**  
 Vinho Mate  
 Vino Mate  
 Vin Mate  
 Wine Mate



**50**  
 Petróleo Mate  
 Petróleo Mate  
 Pétrole Mate  
 Petroil Mate

**Nogueira\_ Noga\_ Noyer\_ Walnut**



**11**  
 Branco Poro Aberto  
 Blanco Poro Abierto  
 Chêne Blanc  
 Oak White



**13**  
 Aspen  
 Aspen  
 Aspen  
 Aspen



**14**  
 Oliva  
 Oliva  
 Oliva  
 Oliva



**15**  
 Carvalho Selvagem  
 Roble Selvagem  
 Chêne Sauvage  
 Salvage Oak



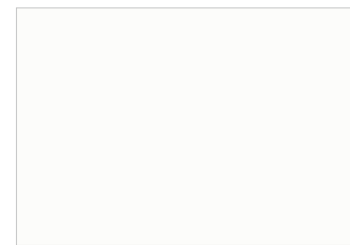
**80**  
 Nogueira  
 Nogal  
 Noyer  
 Walnut



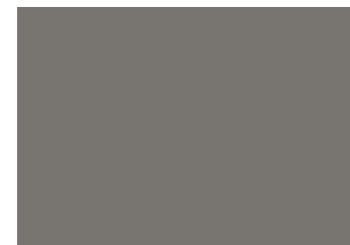
**301**  
 Cimento  
 Cemento  
 Ciment  
 Cement

**Acabamentos Especiais\_ Acabados Especiales\_ Finitions Spéciales\_ Special finishes**

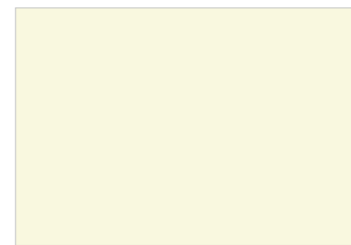
**Lacados\_ Lacas\_ Laqué\_ Lacquered**



**34**  
 Branco Mate  
 Blanco Mate  
 Blanc Mate  
 white Mate



**33**  
 Castanho Mate  
 Castaño Mate  
 Marrón Mate  
 Brown Mate



**38**  
 Pérola Mate  
 Pearla Mate  
 Perle Mate  
 Pearl Mate

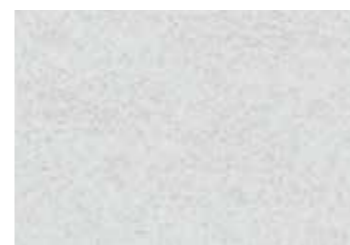


**39**  
 Moka Mate  
 Moka Mate  
 Moka Mate  
 Moka Mate



**40**  
 Terra Mate  
 Tierra Mate  
 Terre Mate  
 Land Mate

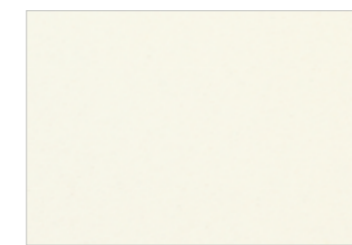
**Cerâmicas\_ Cerámicas\_ Céramiques\_ Ceramics**



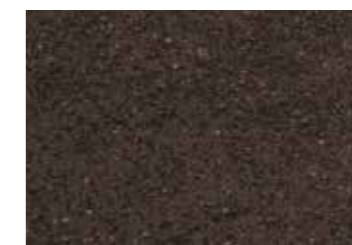
**101**  
 Phedra



**102**  
 Barro



**103**  
 Nieve



**104**  
 Basalt Black



**105**  
 Iron Grey



**41**  
 Mostarda Mate  
 Mostarza Mate  
 Moutarde Mate  
 Mostard Mate



**42**  
 Pedra Mate  
 Piedra Mate  
 Pierre Mate  
 Stone Mate



**43**  
 Camel Mate  
 Camel Mate  
 Camel Mate  
 Camel Mate



**44**  
 Grafite Mate  
 Grafito Mate  
 Graphite Mate  
 Black Lead



**45**  
 Musgo Mate  
 Musgo Mate  
 Musgo Mate  
 Musgo Mate



**106**  
 Basalt Beje



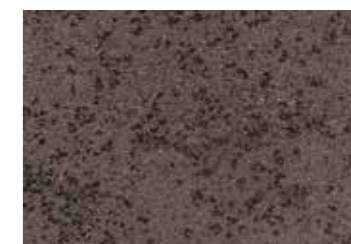
**107**  
 Nero



**108**  
 Iron Corten



**109**  
 Basalt Grey



**110**  
 Iron Cooper



